



**HANDS in Autism®**  
**Interdisciplinary Training &  
 Resource Center**  
 hands@iupui.edu  
 317-274-2675  
 HANDSInAutism.iupui.edu

# LOCAL COMMUNITY CADRES

## ABOUT LCCs

Local Community Cadres (LCCs) are regional community networks of families and professionals invested in serving individuals affected by autism spectrum disorder (ASD) and related developmental disabilities.

## LCC CORE FOUR

The core elements central to all cadres to create meaningful and lasting change include:

### 1. Collaboration & Networking

LCCs encourage bridging and collaboration across diverse points of view to:

- ◆ Facilitate networking and dialogue with openness to diverse ideas.
- ◆ Promote the sharing of resources and information relevant to the local community.
- ◆ Create innovative interdisciplinary solutions.

### 2. Information & Dissemination

Dialogue between LCC chapters, HANDS in Autism® and local stakeholders encourage:

- ◆ Ongoing evaluation and identification of needs in the community.
- ◆ Reciprocal sharing of resources and tools based upon those identified needs.
- ◆ Creation of a mechanism to inform and disseminate regarding regional, state and national initiatives.

### 3. Training & Development

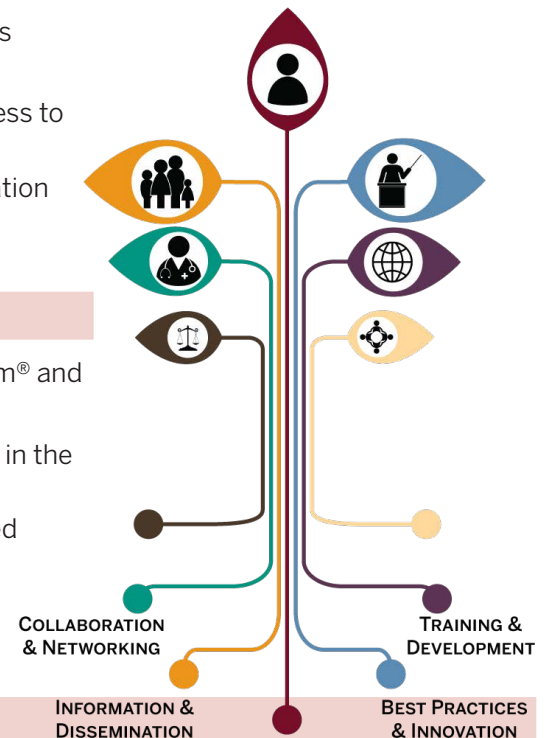
Development of community awareness of and capacity to support individuals with ASD and other developmental disabilities through training and professional development aimed at:

- ◆ Ensuring community awareness of available trainings and resources.
- ◆ Providing consistency in ASD knowledge across the community and its many systems.
- ◆ Advancing the capacity to both provide and sustain consistent knowledge and use of science-based methods of working with and supporting affected individuals and families.

### 4. Best Practices & Innovation

The interdisciplinary knowledge-base, connections, experience and skills of the LCC membership will encourage shared community responsibility and effort in addressing the needs of families and professionals supporting and caring for individuals with ASD and related disabilities that foster:

- ◆ Engagement at a systems level towards effective problem-solving and consistent practices.
- ◆ Facilitation towards development and sharing of solutions and resources related to local needs across systems.
- ◆ Using existing State and community resources to enhance local, as well as the broader statewide LCC action planning initiatives.



### LCC Mission:

To facilitate the sharing of information, training and resources that improve understanding and support of ASD and other disabilities through collaboration across community systems including, but not limited to:

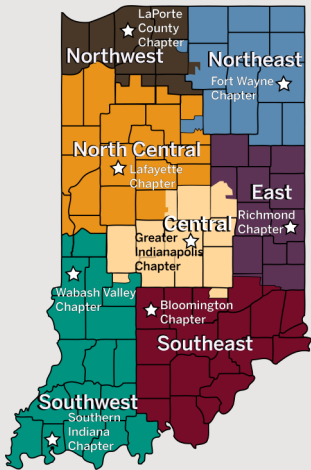
- ◆ Family Members
- ◆ Individuals
- ◆ School
- ◆ Medical
- ◆ Service
- ◆ Advocacy
- ◆ Judicial

### Vision

Community members across diverse roles take joint responsibility to identify solutions that will work within their local community to improve the quality of life and inclusion of individuals with ASD and their families.



**HANDS in Autism®**  
**Interdisciplinary Training &  
 Resource Center**  
 hands@iupui.edu  
 317-274-2675  
 HANDSInAutism.iupui.edu



**LCC Regions & Chapters:**  
 Currently, eight (8) cadre chapters are operating across seven (7) regions in Indiana. These cadres are continually working to identify and address their community-specific needs:

- ◆ Central LCC, Greater Indianapolis Chapter
- ◆ North Central LCC, Lafayette Area Chapter
- ◆ Southeast LCC, Bloomington Area Chapter
- ◆ Southwest LCC, Southern Indiana Chapter
- ◆ Southwest LCC, Wabash Valley Chapter
- ◆ Northwest LCC, LaPorte County Chapter
- ◆ Northeast LCC, Fort Wayne Area Chapter
- ◆ East LCC, Richmond Area Chapter

## HISTORY & DEVELOPMENT OF THE LCCs

In 2010, HANDS in Autism® conducted a summit based upon data-driven decision-making to facilitate development of LCCs across multiple regions of the state. Cadres in each region consisted of local representatives working together to identify and address localized needs and potential solutions from the perspective of their local culture, resources and systems.

HANDS in Autism® served as facilitators, providing technical assistance and support in development of resources, training, events and materials dissemination. The purpose of this facilitation was to provide the cadres with information pertaining to each region's strengths, challenges and gaps in services, supports and knowledge, through ongoing dissemination, aggregation and reporting of the Indiana ASD Needs Assessment data.

## LCC MEMBERSHIP

Cadres are comprised of local, diverse, self-appointed stakeholders invested in addressing the needs of individuals and families affected by ASD and other related developmental disabilities. Membership is representative of the full range of supports across the lifespan.

### Expectations of Membership

Community time and effort is needed to build effective supports for individuals with ASD and related disabilities that are relevant to each region. Members choose their level of participation based upon the time they feel they can commit to. All levels of participation are welcome and needed!

## LCCs ACTIVITIES & COMMUNITY CONTRIBUTIONS

Each LCC chapter is unique and connects (live or on-line) regularly to:

- ◆ **Assess and Evaluate:** Develop an understanding of community needs to be addressed and the status of current efforts using the ASD Needs Assessment and other data.
- ◆ **Engage Stakeholders:** Mobilize interest, consensus and support regarding the strategies used to address community needs and how to achieve positive outcomes.
- ◆ **Develop an Action Plan:** As a cohesive group, formulate an action plan for addressing the identified needs and achieving positive outcomes.
- ◆ **Implement Strategies:** Work together within the cadre and the community to implement strategies identified in the LCC action plan.

Activities pursued by each cadre are based on the identified needs of the region including, but not limited to:

- ◆ Workshops for parents, school personnel, medical professionals and community providers
- ◆ Community events and other networking initiatives
- ◆ Strategic dissemination of informational materials or resources
- ◆ Community participation in polls and surveys to inform LCC and State activities

### State-wide Impact & Benefits of LCCs

In addition to addressing local needs, the cadres also inform the State's Indiana Interagency Autism Coordinating Council (IIACC) regarding local challenges, needs and gaps in ASD services and supports. The IIACC represents major statewide partners and stakeholders and informs recommendations and feedback to the Family Social Services Administration (FSSA) Bureau of Developmental Disability Services (BDDS) regarding the state of ASD services, gaps and needs in Indiana. LCC members are encouraged to participate in quarterly IIACC meetings to represent their region as a Community Advisory Group (CAG) participant.

### LEARN MORE:

**[HANDSInAutism.IUPUI.edu/collaborations/lcc/](https://HANDSInAutism.IUPUI.edu/collaborations/lcc/)**